



**GF ENGITECH
I N C**



**Where fabrication meets
the manufacturing floor.**

2000
Since

www.Gfengitech.ca

WHO WE ARE

GF Engitech INC is a dynamic Indian company, experienced internationally and recognized as a leader in the design, fabrication and manufacture of equipment in stainless steel and other exotic materials. GF Engitech INC provides a service to industries where sanitation, sterilization, corrosion and erosion are of concern

Founded in 2000 by the owner, GF Engitech INC . evolved rapidly into a significant service provider, designing and custom manufacturing a comprehensive line of stainless steel equipment and machine components. These include but are not limited to, stainless steel tanks, pressure and processing vessels, hard coated shafts and sleeves, wear rings and a large variety of custom coatings. GF Engitech INC also offers custom designed skid-mounted processing systems.

Leading edge technology, coupled with constant effort, considerable ambition, a passion for quality and great dedication to our customers, has allowed GF Engitech INC to develop and grow. We have come a long.

“We at 'GF Engitech' combines creative engineering with an extraordinary commitment to project success.”





WHAT WE DO

GF Engitech INC starts each project with raw material and completes them with special paint & powder coating, tube fabrication, fabrication and forming, assembly packaging and delivery. Our large and experienced team can carry out all long and short production projects and believes in multiple shift operation and computer aided automation so that the quality and efficiency is increased. Customer satisfaction is the utmost priority at GF Engitech INC and thus we are continuously looking for improvements.

As we focus on delivering quality metal products when you require them, how you require them. At GF Engitech INC, we maintain our standards and focus on the core competencies in fabricating and manufacturing procedures and also allow our customers to use their resources in marketing, product conception and distribution.



OUR FOCUS

Custom fabrication and modularization of carbon steel, stainless steel and specialty alloys including industrial coatings and other value added services.



OUR GOAL

To maximize the business value of your project through early contractor involvement (ECI) and optimize the fabrication process with modularization.



OUR MISSION

Adding value to everything we do by creating better solutions.

CORE TEAM MANPOWER



Management

- HR Manager
- Finance manager
- Project Manager
- Production Manager
- Quality Manager



Technical Worker

- Welder
- Fitter
- Helper
- Painter
- CNC Programmer



Core Engineer

- Production Engineer
- Quality Engineer
- Paint Supervisor



SERVICES

Our skilled team have decades of technical expertise in the metalworking industry which means that you can expect customized solutions to suit application needs and requirements as well provide strategic consultation and finding innovative solutions to technical problems.



Punching



Cutting

(shearing, laser, plasma, oxyfule)



Forming



Bending



Custom Machining



Coating




Design Service



Assembly

OUR EQUIPMENT / MACHINERY FLOOR CAPACITY

01




60,000
Sq. Ft.

FLOOR AREA

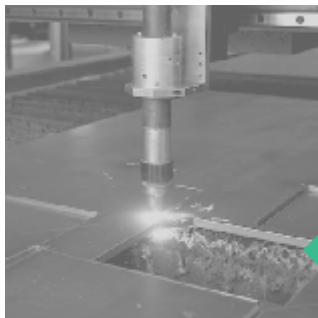


03



30 TON = 1
20 TON = 2
05 TON = 3

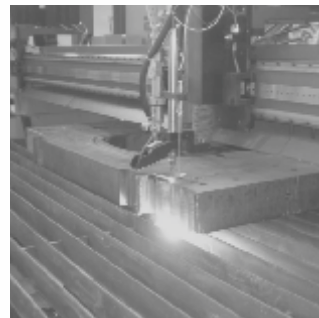
OVERHEAD CAPACITY






**MAX THICKNESS
CUT IN PLASMA
= 16 MM**

CNC PLASMA




03



**MAX THICKNESS
CUT IN OXYFUEL
= 100 MM**

OXYFUEL CUTTING

04



**MAXIMUM PLATE
THICKNESS TO
ROLL = 30 MM**

ROLLING MACHINE

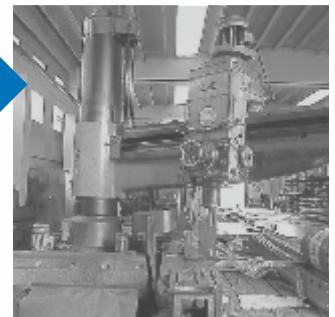


05



**MAX DRILL
HOLE
= Ø50 MM**

RADIAL DRILL



06



**MAXIMUM PLATE
THICKNESS TO BE
PUNCH = UP TO 5 MM**

TURRET PUNCHING
(AMADA-VELA-2)



07



SMAW (SHIELDED
METAL ARC WELDING)
SAW(SUBMERGED
ARC WELDING) **MIG**
(FRONIUS) & (LINCOLN)
TIG
WELDING

INDUSTRY WE SERVE



OUR CAPABILITIES IN ALL ASPECTS

General Capability

- Contract
- Prototype

Intended Applications

- Dissimilar Metals
- Seam Welded Tube
- Tubular Frame

Material

- Aluminium
- Mild Steel
- Stainless Steel

Additional Services

- Engineering
- Machining
- Assemblies
- Prototype



Arc/Resistance Welding Process

- SMAW (Shielded Metal Arc Welding)
- MIG (Metal Inert Gas welding)
- TIG (Tungsten Inert Gas welding)
- SAW (Sub Merged Arc welding)

Fabrication Process

- Shearing
- Notching
- Bending
- Forming
- Welding
- Painting
- Powder Coating



Industry Standards

- AWS - American Welding Society
- ASME - American Society of Mechanical Engineers
- ASTM - American Society for Testing and Materials
- ISO - International Organization for Standardization - 9001:2015



DESIGN

GF Engitech INC will work closely with engineers to assist with the design process of your product. Submit your drawing for a no obligation quote. Don't have a drawing? No problem. Our Engineering team can create one for you.

COUNTRY WE SERVE WITH OUR SERVICES



INDIA



UNITED AMERICA



CANADA



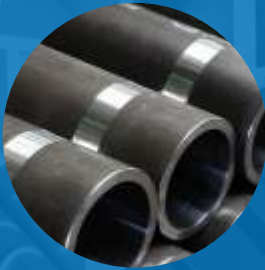
UNITED ARAB EMIRATES



SINGAPORE

WIDE CAPABILITIES IN ALL ASPECTS

Along with fast results, we have the capability to work with a variety of metals. No matter the material, we have you covered. Common types of materials include most grades of



Carbon steel



Stainless steel



Steel



Aluminium



Iron



Brass



Bronze



Copper



Inconel



FINISHING AND ASSEMBLY

Once created, your custom metal fabrication project must be properly finished in order to yield the best possible results in the application the component is expected to perform. Rigid Welding offers several different finishing options to offer better control, timing, and project costs.

We can surface prep or grind any part to whatever finish or tolerance you require. Surface finishing, such as mill and stainless finishes, as well as part deburring, polishing and other finishes Rigid has to offer are:

- Powder Coating
- Painting
- Coating Zinc Plating
- Hot Dip Galvanized
- Sand blasting, short blasting, glass bead blasting,
- Anodized
- Epoxy Coat
- Chrome

Our assembly services complete our turn-key fabrication process.



QUALITY VERIFICATION

Godhra Fabricators adheres to a strict internal quality-control program that we can modify to your specifications. From high precision to standard construction tolerances, our specialists inspect parts and procedures throughout production to verify their excellence.

QUALITY CONTROL

Godhra Fabricators is committed to providing the best quality of services and customer relations to all our clients and customers using continuous improvement methods, procedures and policies.

Our welding procedures are certified by AWS and our fabrication projects undergo a series of checks to ensure dimensional accuracy, completeness, weld quality, and conformance to the design and specifications. The finished product will be subjected to testing as specified by the customer.



Inspection Capabilities



Visual Testing
(VT)



Radiography
Testing (RT)



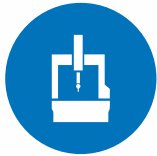
Ultrasonic
Testing (UT)



Dye Penetrant
Testing (PT)



Hydrostatic
Testing



Coordinate
measuring machine
(CMM)



Positive Material
Identification
(PMI)



Magnetic Particle
Inspection (MPI)



Pneumatic
Testing



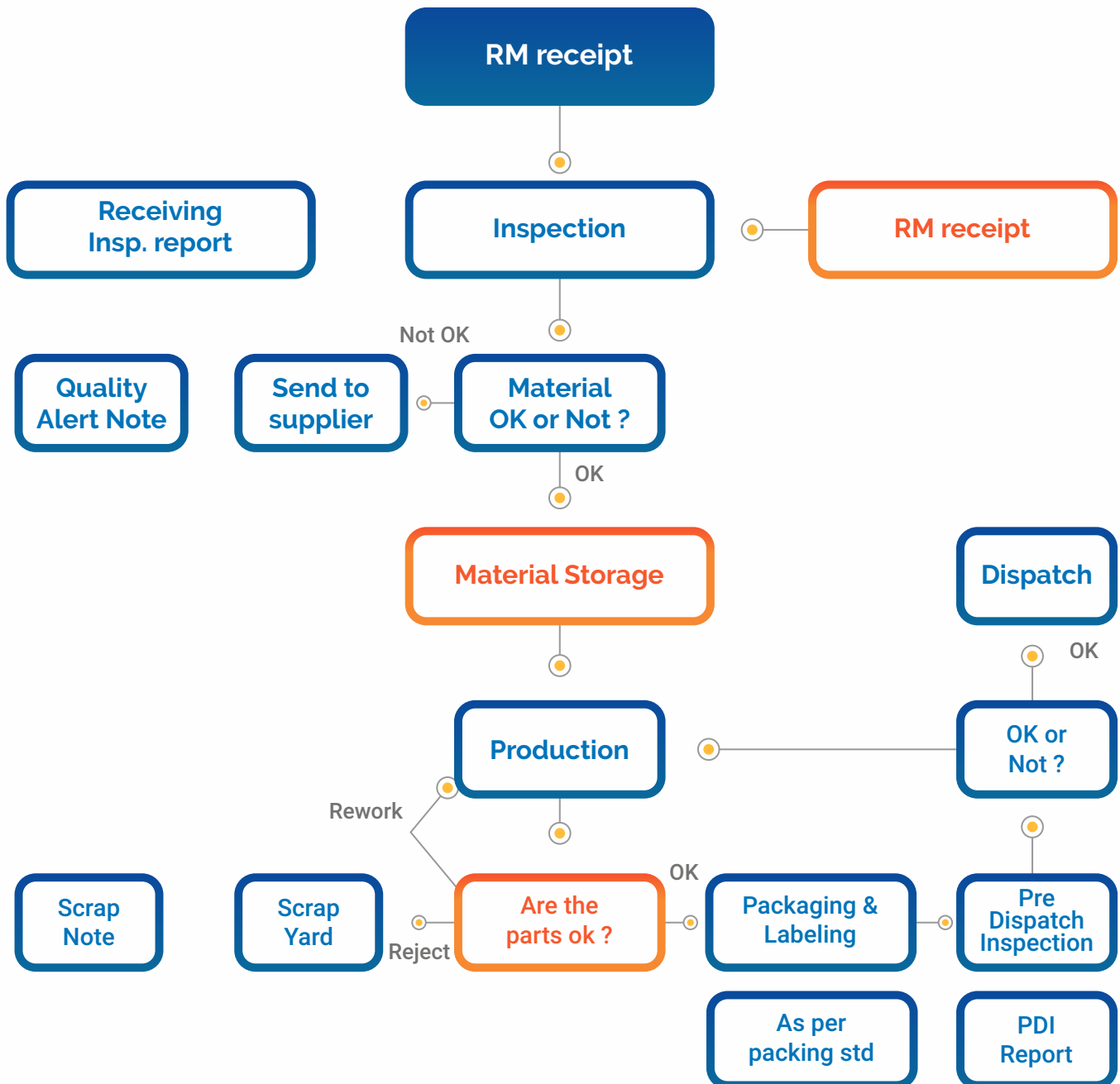
WELDING CERTIFICATES

All of our custom welding services are delivered with the certifications specified by our customers. We follow the American welding society.

- ❑ ISO 9001 : 2015
- ❑ Welding Procedure Specification
- ❑ Procedure Qualification Record
- ❑ Welder Performance Qualification



Process Flow Chart





Best Solution for Industrial Fabrication.

From the smallest piece to the biggest project, we're here to support your every need. To request a quote, please send your compressed-file drawings, quantities and contact information.

Contact Us



**GF ENGITECH
INC**

Phone : +13439877502
+91 98240 41432
+91 79 4008 5991

Mail : info@GfEngitech.ca

Canada : GF Engitech INC,
579 Rockrose Way, Ottawa, K1T 3T8.

India : Plot No. E-149, E-150, E-158,
E-159 Road No. 34, GIDC - Sanand,
Gujarat - 382170